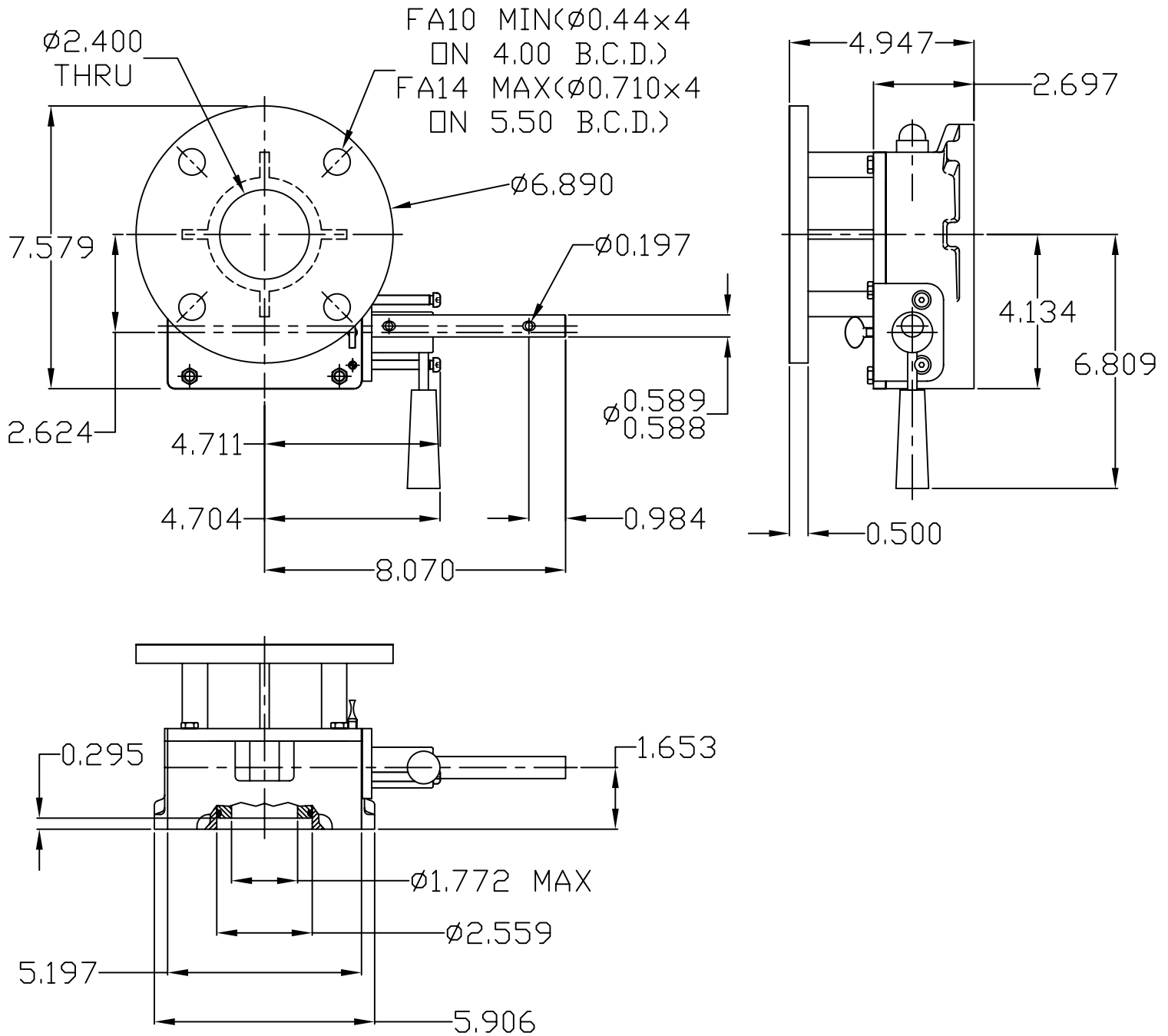


# ACTUATOR: M12SD



## GENERAL INFORMATION

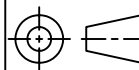
TRAVEL..... $90^\circ \pm 10^\circ$  AT BOTH ENDS      MECHANICAL ADVANTAGE..... $13.8 \pm 10\%$   
 RATIO.....50:1      OUTPUT TORQUE(1000 CYCLES).....12000 IN-LBS  
 TURNS TO CLOSE..12.5      INPUT TORQUE(1000 CYCLES).....870 IN-LBS

MOUNTING HOLE DETAIL: PREFERRED....FA12 (4 x 1/2-13 ON 4.95 BCD)  
 (MSS SP-101)      MAXIMUM.....FA14 (4 x 5/8-11 ON 5.50 BCD)  
    MINIMUM.....FA10 (4 x 3/8-16 ON 4.00 BCD)



**MASTERGEAR**

A REGAL-BELOIT COMPANY  
 5466 EAST ROCKTON RD. · SOUTH BELOIT, IL 61080



DIMENSIONS  
 IN  
 INCHES

SCALE

1/4

DRAWING  
 No.

M12SD

THIS PRINT IS CONFIDENTIAL AND IS THE PROPERTY OF MASTERGEAR. THIS PRINT SHALL NOT BE USED,  
 COPIED OR REPRODUCED IN WHOLE OR IN PART NOR SHALL THE CONTENTS BE REBEALED IN ANY  
 MANNER TO ANYONE UNLESS WRITTEN PERMISSION IS OBTAINED FROM MASTERGEAR.



NJC

REV. B  
 11/18/05