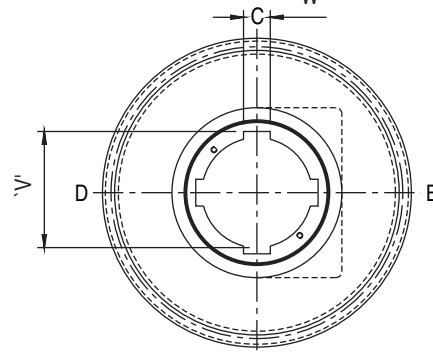
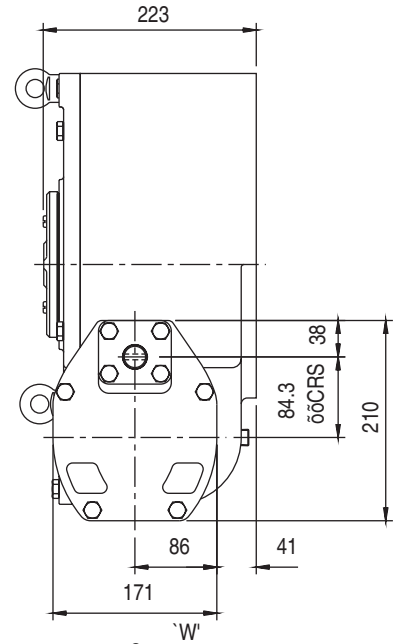
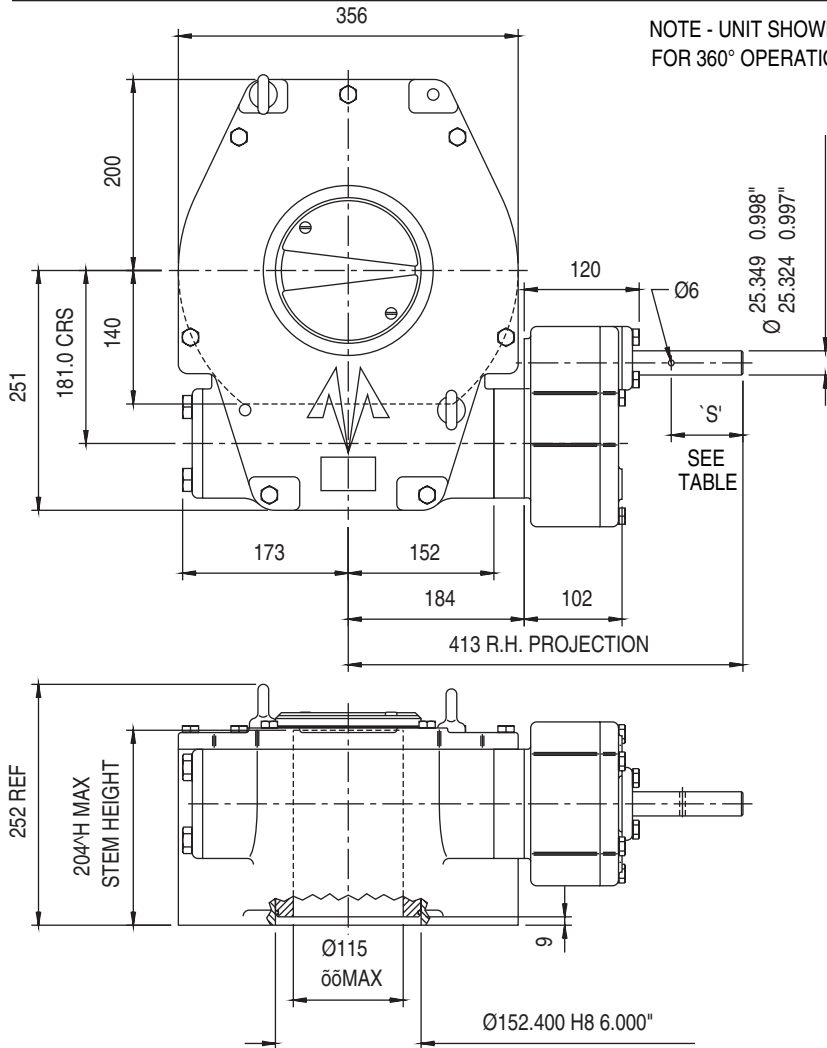
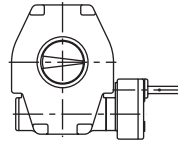


ACTUATOR TYPE - MWJF50/S5

NO STOPSCREWS
FOR 360° ROTATION
∅∅NO LEGENDS



OUTPUT KEYWAY DETAILS
SHOWN IN OPEN POSITION

GENERAL INFORMATION

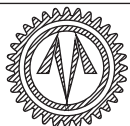
TRAVEL.....360°
RATIO.....250:1
TURNS FOR 360° OUTPUT ROTATION.....250

MECHANICAL ADVANTAGE.....73.0 +/- 10%
MAXIMUM OUTPUT TORQUE.....11891 Nm
MAXIMUM INPUT TORQUE.....163 Nm

MOUNTING HOLE DETAIL: PREFERRED....F25 (8 x M16 ON 254 PCD)
MAXIMUM.....F25
MINIMUM.....F20 (8 x M12 ON 197 PCD)

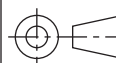
APPROXIMATE WEIGHT.....155 Kg (excluding handwheel)

HANDWHEEL DATA		
HANDWHEEL DIA	'S'	
10"	254	32
12"	305	32
14"	356	32
18"	457	45
24"	610	45
30"	762	45
36"	914	63



OPPERMAN MASTERGEAR

Hambridge Road, Newbury, Berkshire, RG14 5TS. ENGLAND
Telephone: (01635) 811500 Telefax: (01635) 811501



DIMENSIONS
IN

SCALE

DRAWING
No.

MM INCHES

1:7.5

ME-15511

THIS DRAWING/DESIGN IS THE PROPERTY OF OPPERMAN MASTERGEAR LTD. AND ©
MUST NOT BE USED OR COPIED WITHOUT THEIR SPECIFIC WRITTEN CONSENT.

REV. A
20DEC95