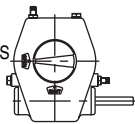
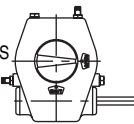


ACTUATOR TYPE - MWBF64

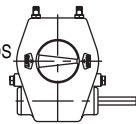
66TWO STOPSCREWS
66FOR 90° ROTATION
OPEN AND SHUT LEGENDS
66(LEGEND 'Y')



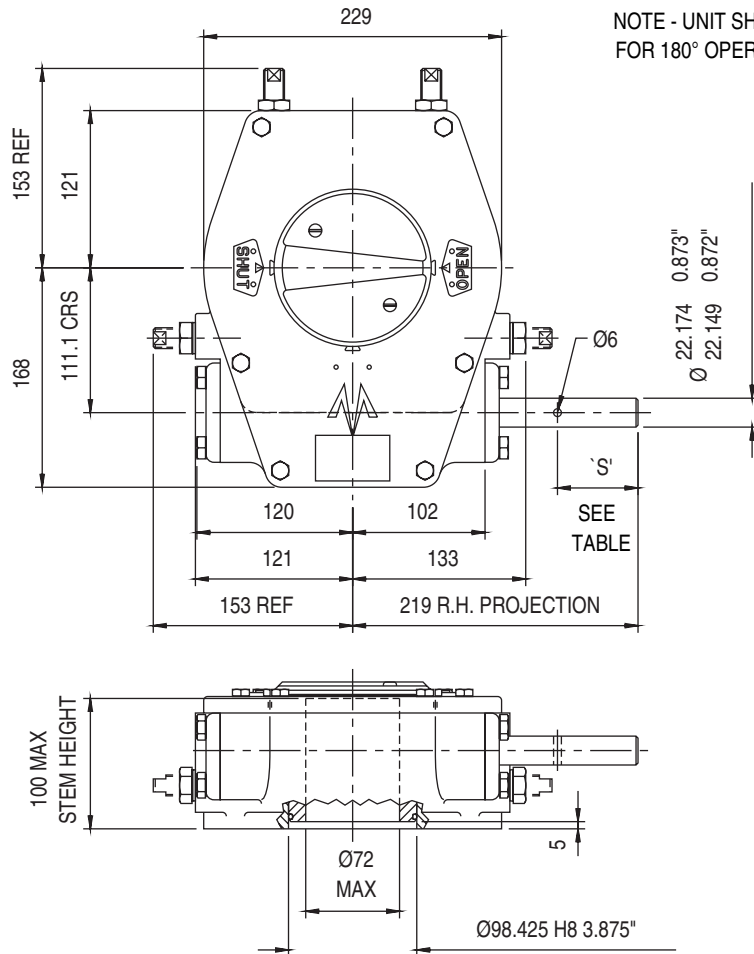
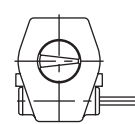
66TWO STOPSCREWS
66FOR 90° ROTATION
OPEN AND SHUT LEGENDS
66(LEGEND 'X')



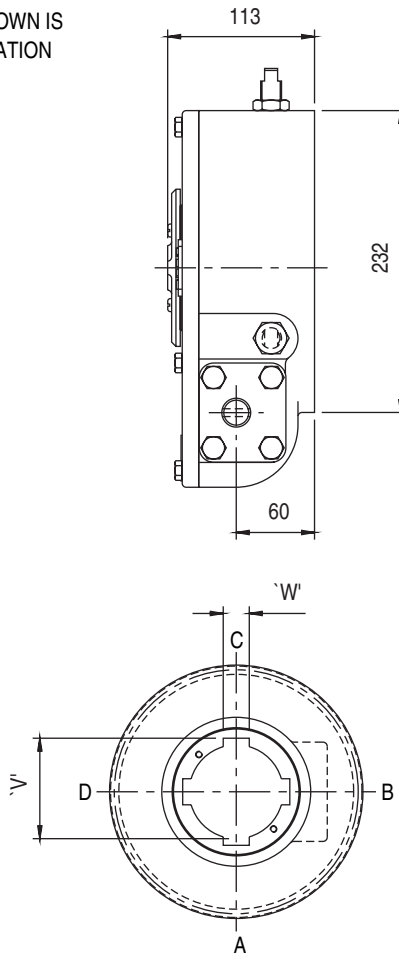
66TWO STOPSCREWS
FOR 180° ROTATION
OPEN AND SHUT LEGENDS



NO STOPSCREWS
FOR 360° ROTATION
66NO LEGENDS



NOTE - UNIT SHOWN IS
FOR 180° OPERATION



OUTPUT KEYWAY DETAILS
SHOWN IN OPEN POSITION

GENERAL INFORMATION

TRAVEL..... 90° +/- 5° AT BOTH ENDS

OR 180° +/- 5° AT BOTH ENDS

OR 360°

RATIO.....64:1

TURNS TO CLOSE.....16 AT 90° 32 AT 18°

MECHANICAL ADVANTAGE.....18.7 +/- 10%

MAXIMUM OUTPUT TORQUE.....2373 Nm

MAXIMUM INPUT TORQUE.....127.0 Nm

MOUNTING HOLE DETAIL: PREFERRED....F14 (4 x M16 ON 140 PCD)

MAXIMUM.....F16 (4 x M20 ON 165 PCD)

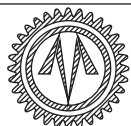
MINIMUM.....F12 (4 x M12 ON 125 PCD)

APPROXIMATE WEIGHT.....31 Kg (excluding handwheel)

HANDWHEEL DATA

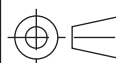
HANDWHEEL DIA 'S'

HANDWHEEL DIA	'S'
10"	254
12"	305
14"	356
18"	457
24"	610
30"	762
36"	914



OPPERMAN MASTERGEAR

Hambridge Road, Newbury, Berkshire, RG14 5TS. ENGLAND
Telephone: (01635) 811500 Telefax: (01635) 811501



DIMENSIONS
IN

SCALE

DRAWING
No.

MM INCHES

1:5.5

ME-15503

THIS DRAWING/DESIGN IS THE PROPERTY OF OPPERMAN MASTERGEAR LTD. AND ©
MUST NOT BE USED OR COPIED WITHOUT THEIR SPECIFIC WRITTEN CONSENT.

REV. A
09OCT95