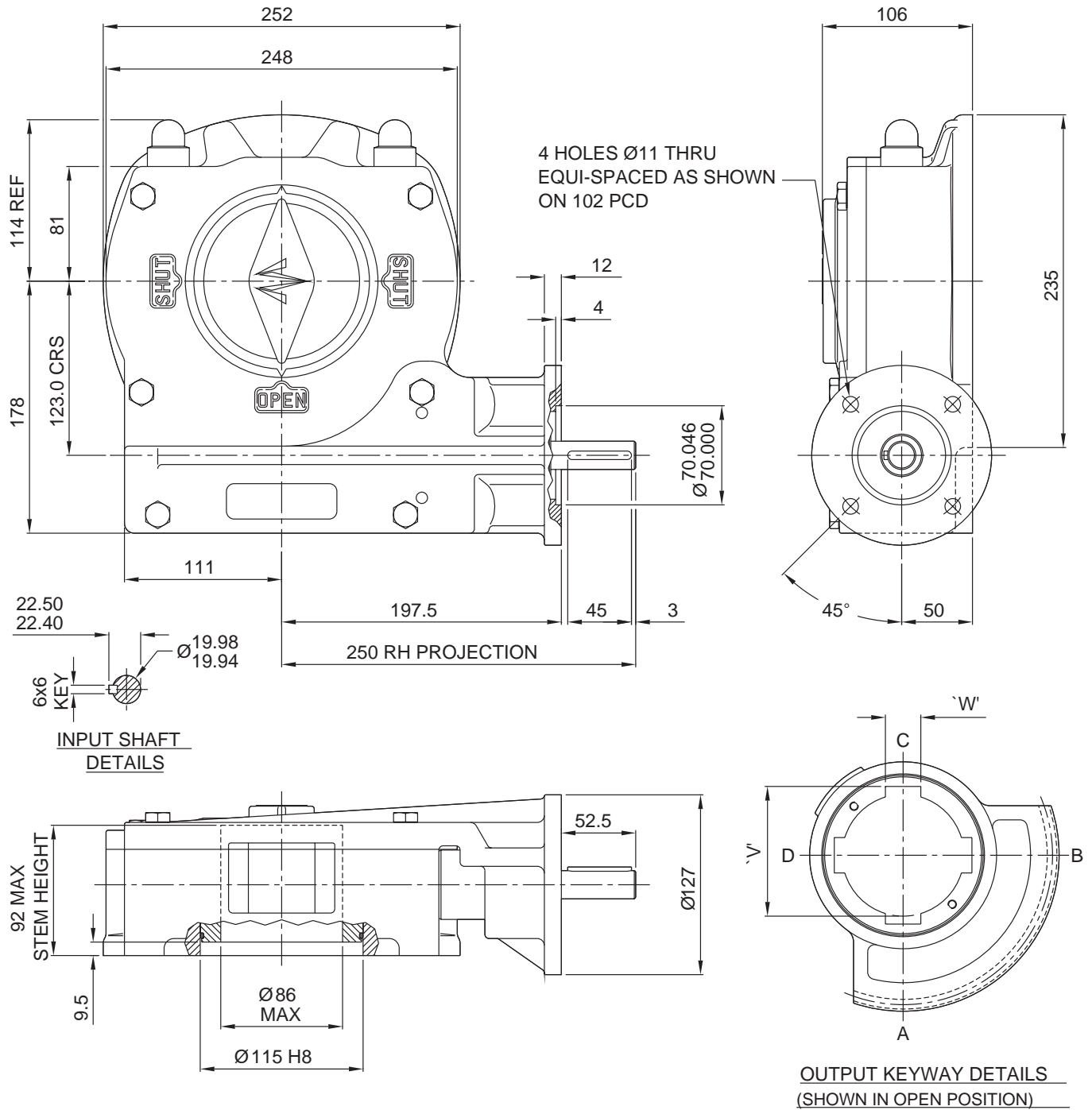


ACTUATOR TYPE - M15/F10

SL039



BASIC PARTS BUILD No. N/A

TRAVEL.....90° +/- 5° AT BOTH ENDS

RATIO.....68:1

TURNS TO CLOSE.....17

MECHANICAL ADVANTAGE.....20.5 +/- 10%

MAXIMUM OUTPUT TORQUE.....3400 Nm

MAXIMUM INPUT TORQUE.....166 Nm

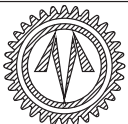
MOUNTING HOLE DETAIL (ISO 5211):

PREFERRED....F16 (4 x M20 ON 165 PCD)

MAXIMUM.....F20 (8 X M12 ON 197 PCD)

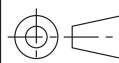
MINIMUM.....F14 (4 x M16 ON 140 PCD)

APPROXIMATE WEIGHT.....30.5 Kg



OPPERMAN MASTERGEAR

Hambridge Road, Newbury, Berkshire, RG14 5TS. ENGLAND
Telephone: (01635) 811500 Telefax: (01635) 811501



DIMENSIONS
IN

SCALE

DRAWING
No.

MM INCHES

1:6.5

ME15359

THIS DRAWING/DESIGN IS THE PROPERTY OF OPPERMAN MASTERGEAR LTD. AND
MUST NOT BE USED OR COPIED WITHOUT THEIR SPECIFIC WRITTEN CONSENT.