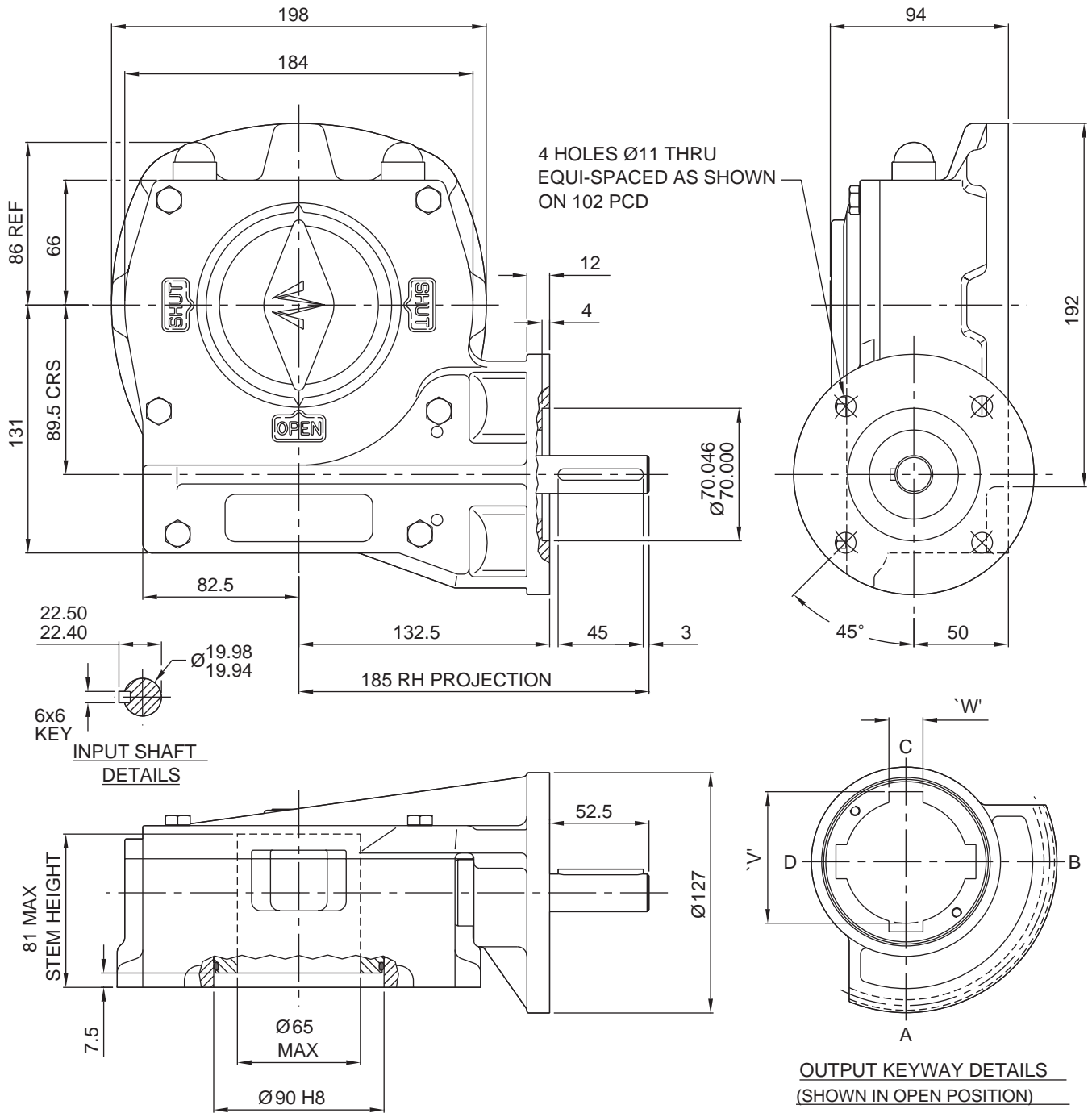


ACTUATOR TYPE - M14/F10

SL039



BASIC PARTS BUILD No. N/A

TRAVEL.....90° +/- 5° AT BOTH ENDS

RATIO.....60:1

TURNS TO CLOSE.....15

MECHANICAL ADVANTAGE.....16.2 +/- 10%

MAXIMUM OUTPUT TORQUE.....1800 Nm

MAXIMUM INPUT TORQUE.....111 Nm

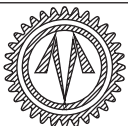
MOUNTING HOLE DETAIL (ISO 5211):

PREFERRED....F14 (4 x M16 ON 140 PCD)

MAXIMUM.....F16 (4 x M20 ON 165 PCD)

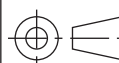
MINIMUM.....F12 (4 x M12 ON 125 PCD)

APPROXIMATE WEIGHT.....17 Kg



OPPERMAN MASTERGEAR

Hambridge Road, Newbury, Berkshire, RG14 5TS. ENGLAND
Telephone: (01635) 811500 Telefax: (01635) 811501



DIMENSIONS
IN

SCALE

DRAWING
No.

MM INCHES

1:6.5

ME15357

THIS DRAWING/DESIGN IS THE PROPERTY OF OPPERMAN MASTERGEAR LTD. AND
MUST NOT BE USED OR COPIED WITHOUT THEIR SPECIFIC WRITTEN CONSENT.