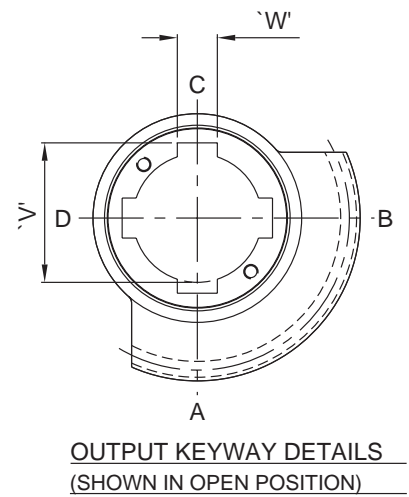
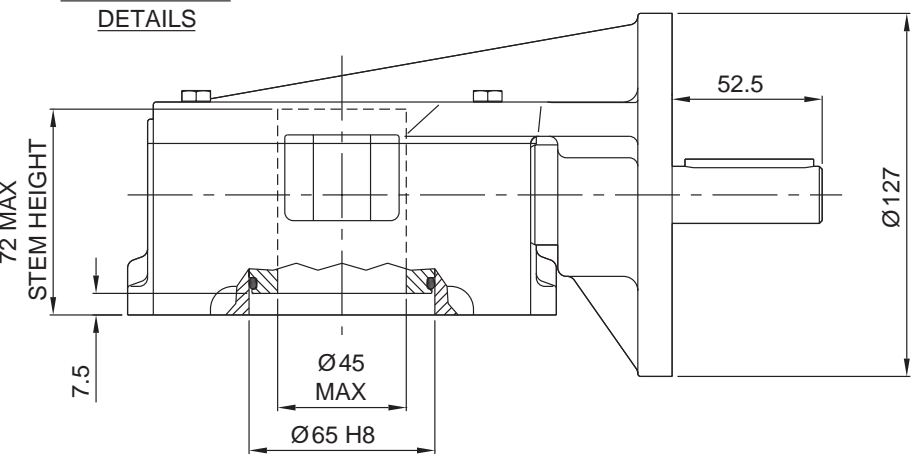
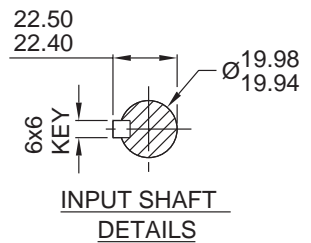
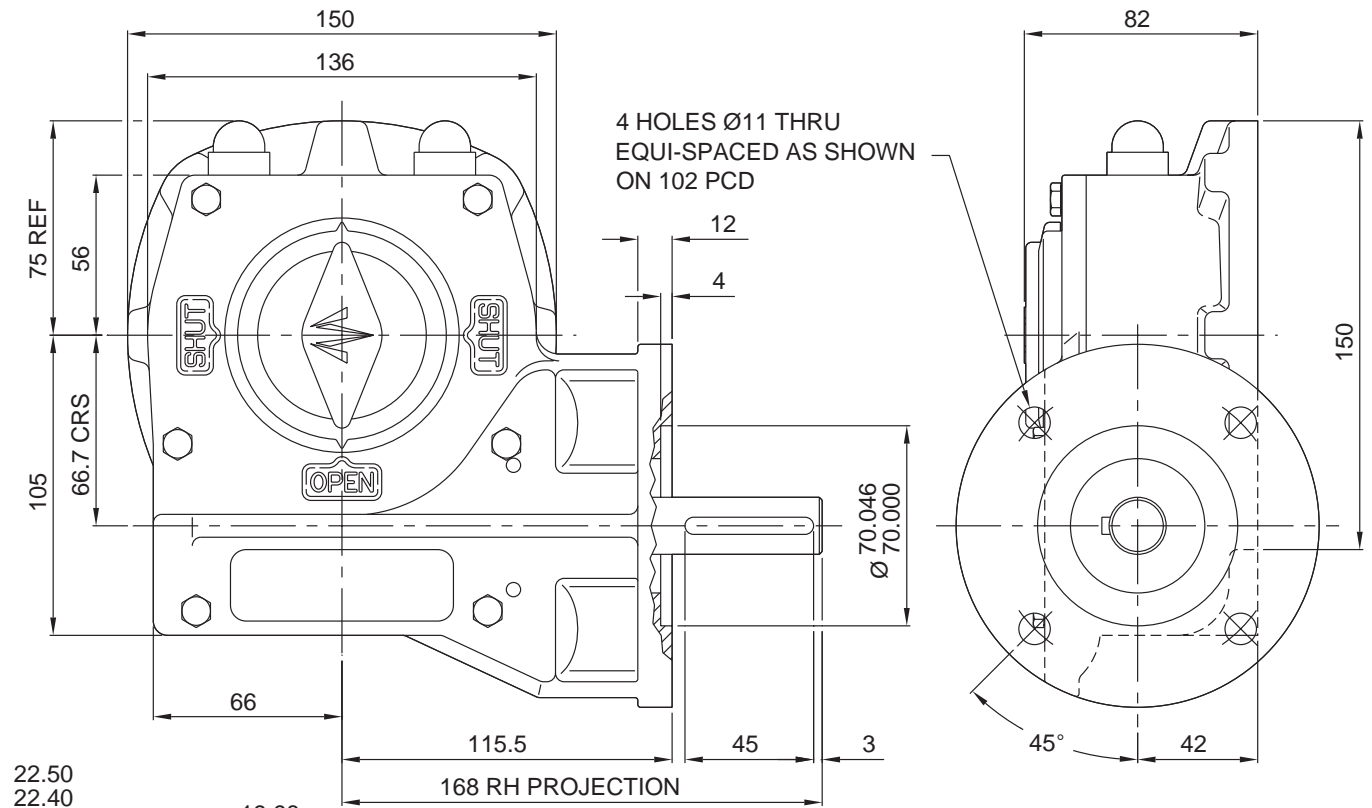


ACTUATOR TYPE - M12/F10

SL039



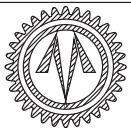
BASIC PARTS BUILD No. N/A

TRAVEL.....90° +/- 5° AT BOTH ENDS
 RATIO.....42:1
 TURNS TO CLOSE.....10.5

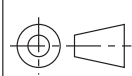
MECHANICAL ADVANTAGE.....11.3 +/- 10%
 MAXIMUM OUTPUT TORQUE.....1000 Nm
 MAXIMUM INPUT TORQUE.....88.5 Nm

MOUNTING HOLE DETAIL (ISO 5211):
 PREFERRED....F12 (4 x M12 ON 125 PCD)
 MAXIMUM.....F14 (4 x M16 ON 140 PCD)
 MINIMUM.....F10 (4 x M10 ON 102 PCD)

APPROXIMATE WEIGHT.....12 Kg



OPPERMAN MASTERGEAR
 Hambridge Road, Newbury, Berkshire, RG14 5TS. ENGLAND
 Telephone: (01635) 811500 Telefax: (01635) 811501



DIMENSIONS IN	SCALE	DRAWING No.
MM INCHES	1:6.5	ME15355

THIS DRAWING/DESIGN IS THE PROPERTY OF OPPERMAN MASTERGEAR LTD. AND
 MUST NOT BE USED OR COPIED WITHOUT THEIR SPECIFIC WRITTEN CONSENT.