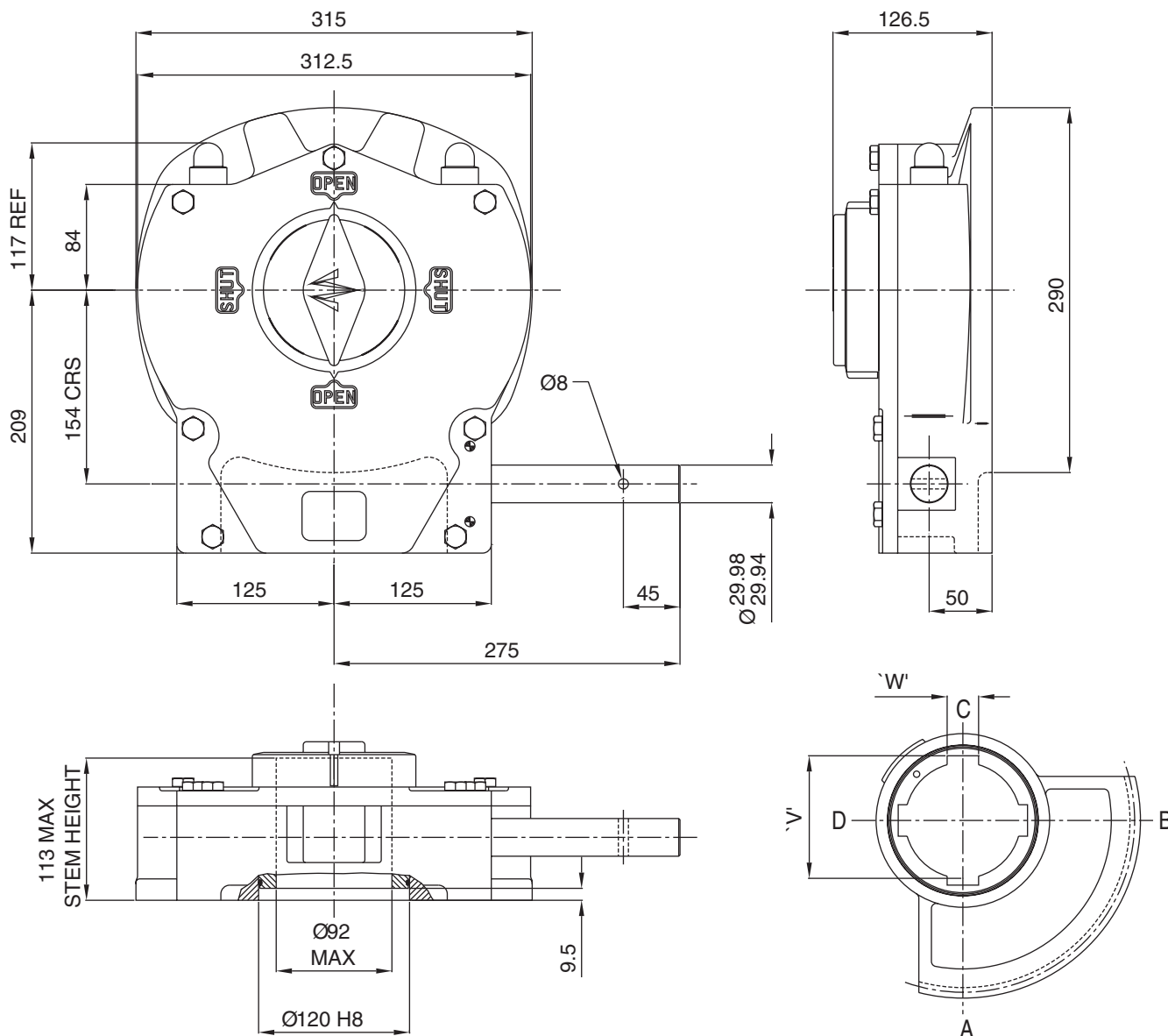


ACTUATOR TYPE - M16



GENERAL INFORMATION

TRAVEL.....90° +/- 5° AT BOTH ENDS
 RATIO.....88:1
 TURNS TO CLOSE.....22

MECHANICAL ADVANTAGE.....26.5 +/- 10%
 MAXIMUM OUTPUT TORQUE.....4500 Nm
 MAXIMUM INPUT TORQUE.....170 Nm

MOUNTING HOLE DETAIL: PREFERRED.....F16 (4 x M20 ON 165 PCD)
 MAXIMUM.....F25 (8 x M16 ON 254 PCD)
 MINIMUM.....F16

APPROXIMATE WEIGHT.....41.2 Kg (excluding handwheel)

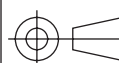
OUTPUT KEYWAY DETAILS SHOWN IN OPEN POSITION

HANDWHEEL DATA	
TYPE	DIA
R18	450
R24	600
R30	750
R36	900



OPPERMAN MASTERGEAR

Hambridge Road, Newbury, Berkshire, RG14 5TS. ENGLAND
 Telephone: (01635) 811500 Telefax: (01635) 811501



DIMENSIONS IN	SCALE	DRAWING No.
MM INCHES	1:5	ME-15307

THIS DRAWING/DESIGN IS THE PROPERTY OF OPPERMAN MASTERGEAR LTD. AND ©
 MUST NOT BE USED OR COPIED WITHOUT THEIR SPECIFIC WRITTEN CONSENT.

REV. B
 21SEP94