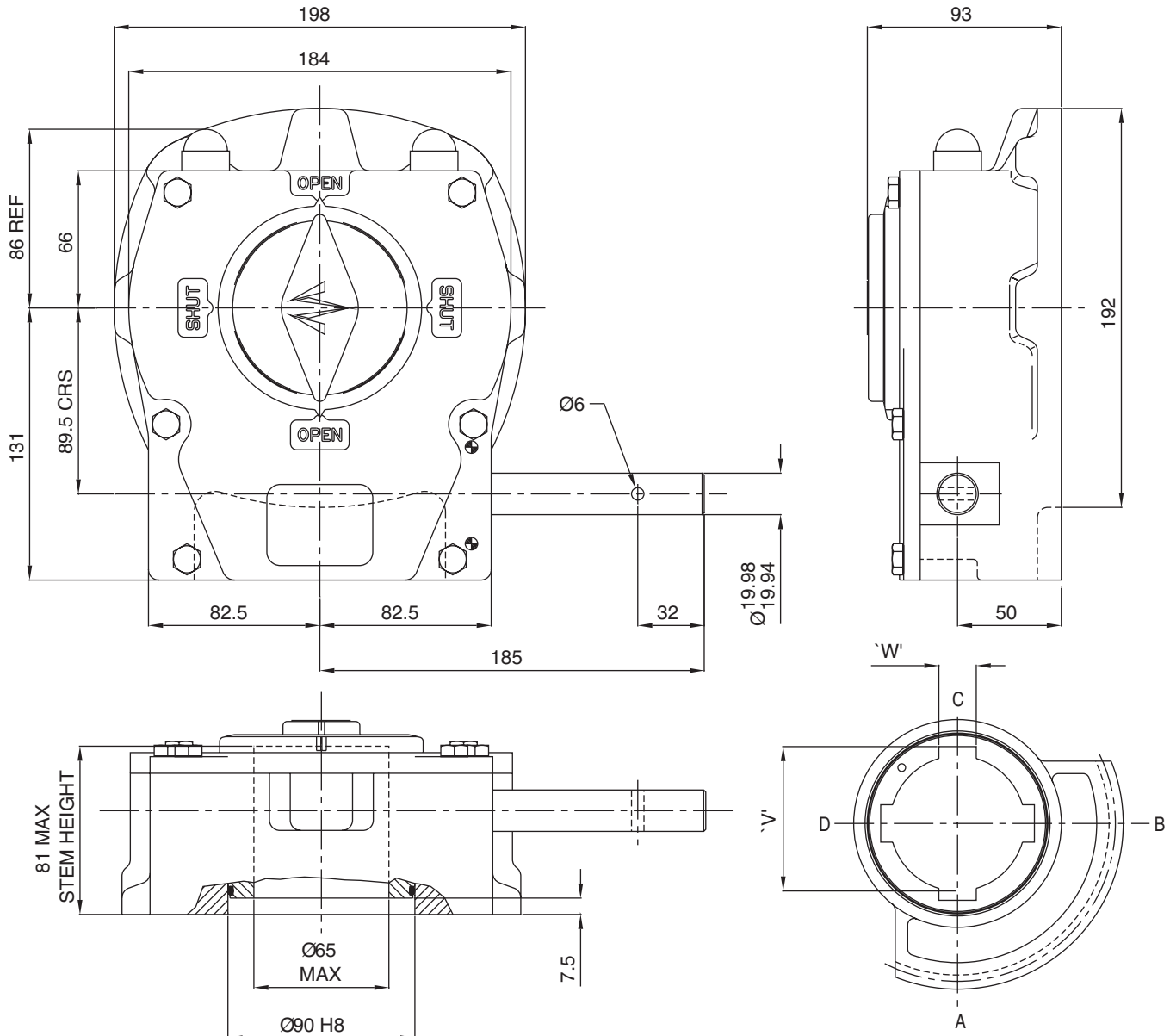


ACTUATOR TYPE - M14



OUTPUT KEYWAY DETAILS
SHOWN IN OPEN POSITION

GENERAL INFORMATION

TRAVEL..... $90^\circ \pm 5^\circ$ AT BOTH ENDS
 RATIO.....60:1
 TURNS TO CLOSE.....15

MECHANICAL ADVANTAGE.....16.2 \pm 10%
 MAXIMUM OUTPUT TORQUE.....1800 Nm
 MAXIMUM INPUT TORQUE.....111 Nm

MOUNTING HOLE DETAIL: PREFERRED.....F14 (4 x M16 ON 140 PCD)
 MAXIMUM.....F16 (4 x M20 ON 165 PCD)
 MINIMUM.....F12 (4 x M12 ON 125 PCD)

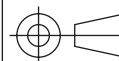
APPROXIMATE WEIGHT..... 14.5 Kg (excluding handwheel)

HANDWHEEL DATA	
TYPE	DIA
SR14	350
R18	450
R24	600



OPPERMAN MASTERGEAR

Hambridge Road, Newbury, Berkshire, RG14 5TS, ENGLAND
 Telephone: (01635) 811500 Telefax: (01635) 811501



DIMENSIONS
IN

SCALE

DRAWING
No.

MM INCHES

1:3

ME-15304

THIS DRAWING/DESIGN IS THE PROPERTY OF OPPERMAN MASTERGEAR LTD. AND ©
 MUST NOT BE USED OR COPIED WITHOUT THEIR SPECIFIC WRITTEN CONSENT.

REV. C
 21SEP94