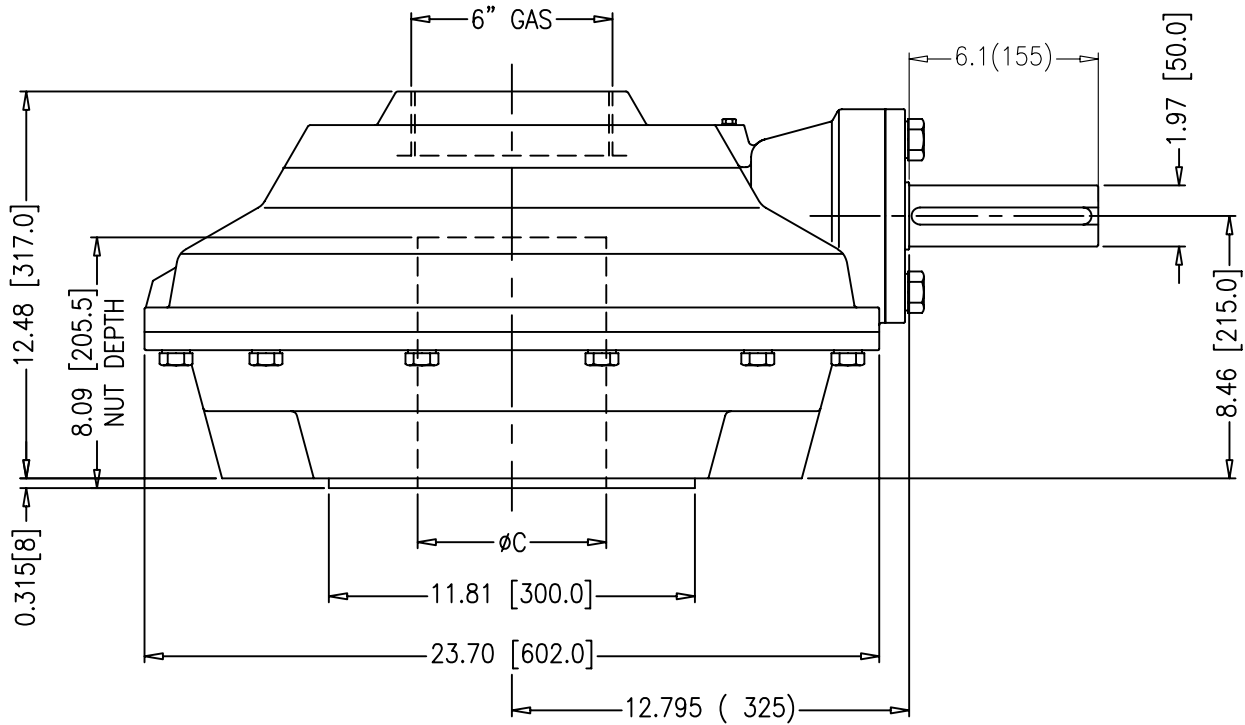
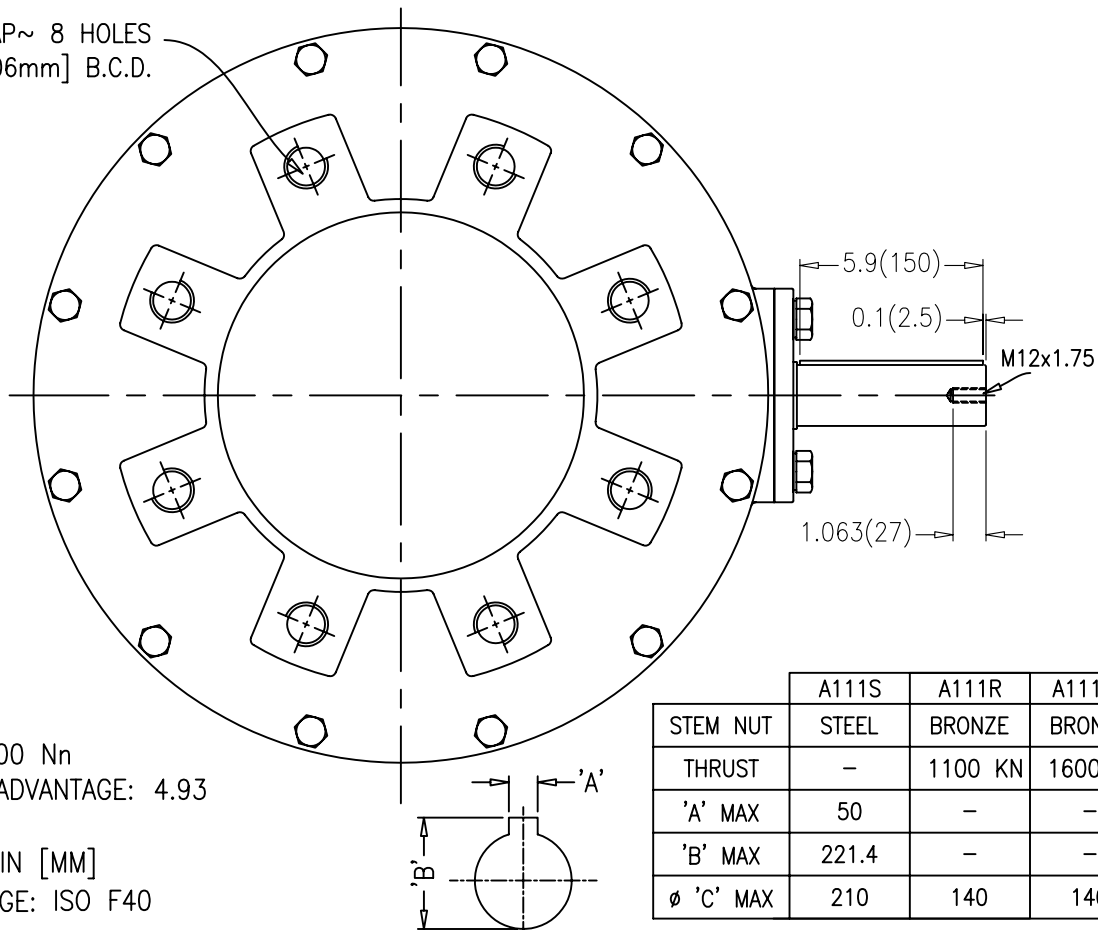


# A111 BEVEL GEAR ISO



M36 TAP~ 8 HOLES  
ON A 16.00[406mm] B.C.D.



## NOTES:

1. TORQUE: 12000 Nn
2. MECHANICAL ADVANTAGE: 4.93
3. RATIO: 5.8:1
4. DIMENSIONS: IN [MM]
5. OUTPUT FLANGE: ISO F40

	A111S	A111R	A111RS
STEM NUT	STEEL	BRONZE	BRONZE
THRUST	-	1100 KN	1600 KN
'A' MAX	50	-	-
'B' MAX	221.4	-	-
$\phi$ 'C' MAX	210	140	140



**COSTRUZIONI MECCANICHE LEGNANESI**

**MASTERGEAR**

DIVISION OF REGAL-BELOIT CORPORATION  
5466 EAST ROCKTON RD. SOUTH BELOIT, IL 61080

THIS DRAWING/DESIGN IS  
THE PROPERTY OF  
MASTERGEAR. AND MUST  
NOT BE USED WITHOUT  
THEIR SPECIFIC WRITTEN  
CONSENT. ©

DO  
NOT  
SCALE  
APPROVED BY  
LD

DRAWING  
No.  
**A111 ISO**  
REV.0  
16-04-03