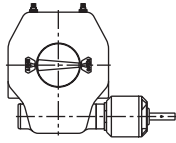
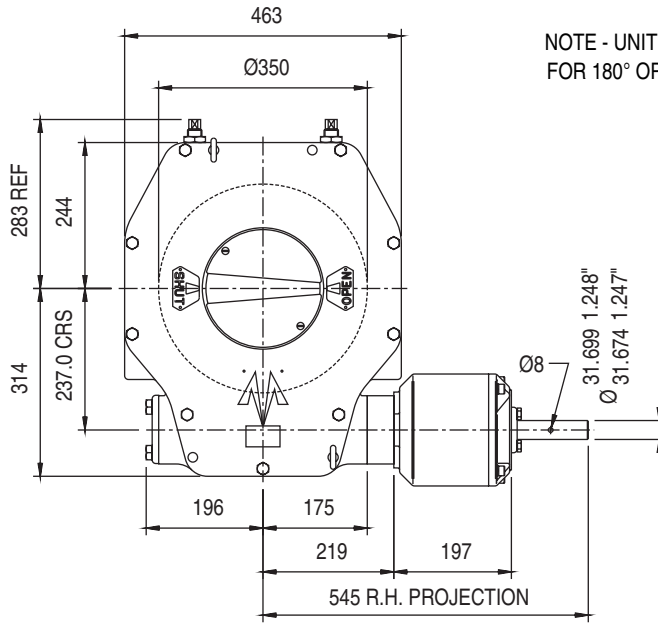
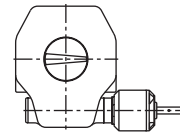


ACTUATOR TYPE - MWLF60/D12

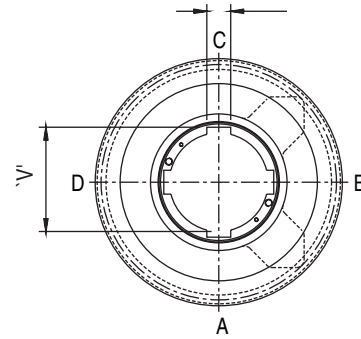
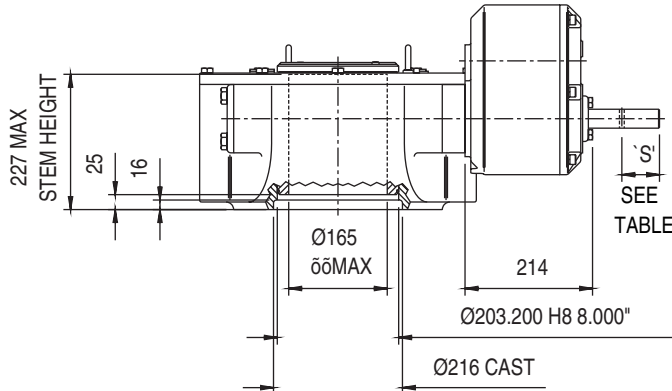
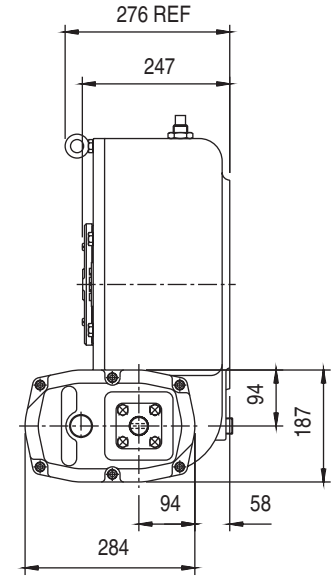
66TWO STOPSCREWS
FOR 180° ROTATION
OPEN AND SHUT LEGENDS



NO STOPSCREWS
FOR 360° ROTATION
66NO LEGENDS



NOTE - UNIT SHOWN IS
FOR 180° OPERATION



OUTPUT KEYWAY DETAILS
SHOWN IN OPEN POSITION

GENERAL INFORMATION

TRAVEL.....180° +/- 5° AT BOTH ENDS
OR 360°

RATIO.....720:1

TURNS TO CLOSE.....360 AT 180°

MECHANICAL ADVANTAGE.....156.5 +/- 10%

MAXIMUM OUTPUT TORQUE.....23781 Nm

MAXIMUM INPUT TORQUE.....152 Nm

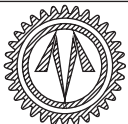
HANDWHEEL DATA		
HANDWHEEL DIA	'S'	
18"	457	45
24"	610	45
30"	762	45
36"	914	63

MOUNTING HOLE DETAIL: PREFERRED....F30 (8 x M20 ON 298 PCD)

MAXIMUM.....F30

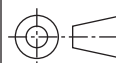
MINIMUM.....F25 (8 x M16 ON 254 PCD)

APPROXIMATE WEIGHT.....261 Kg (excluding handwheel)



OPPERMAN MASTERGEAR

Hambridge Road, Newbury, Berkshire, RG14 5TS. ENGLAND
Telephone: (01635) 811500 Telefax: (01635) 811501



DIMENSIONS
IN

SCALE

DRAWING
No.

MM INCHES

1:12

ME-15513

THIS DRAWING/DESIGN IS THE PROPERTY OF OPPERMAN MASTERGEAR LTD. AND ©
MUST NOT BE USED OR COPIED WITHOUT THEIR SPECIFIC WRITTEN CONSENT.

REV. A
21DEC95