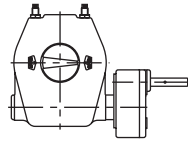
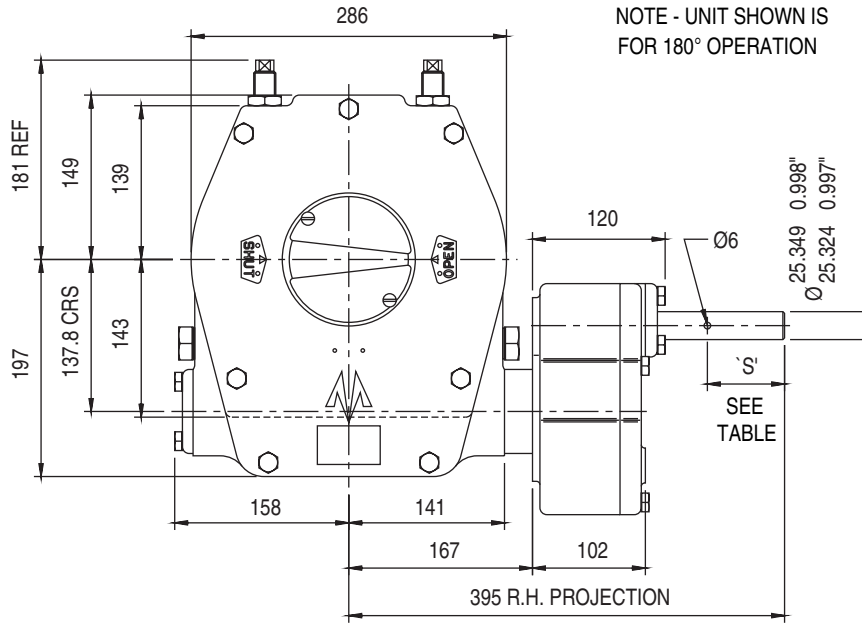
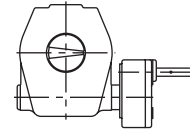


# ACTUATOR TYPE - MWFF57/S3

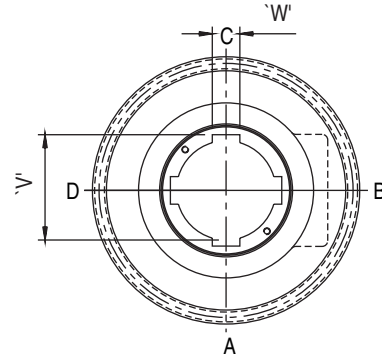
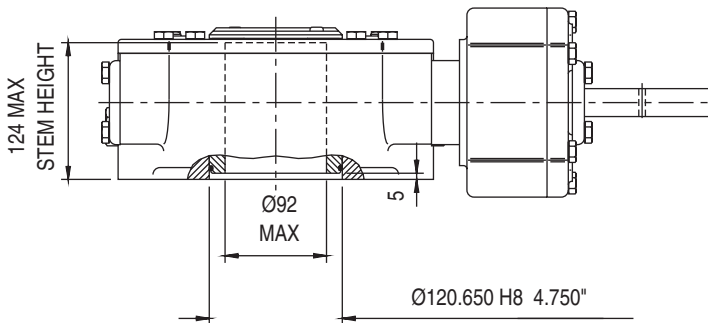
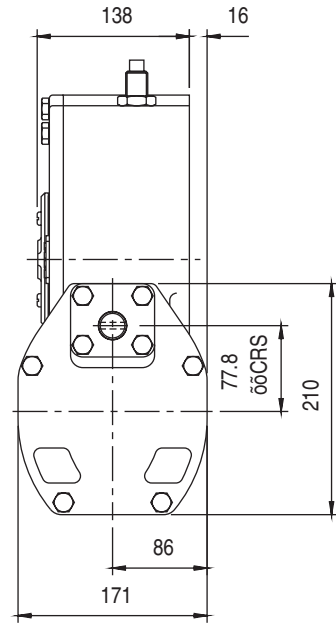
ØØTWO STOPSCREWS  
FOR 180° ROTATION  
OPEN AND SHUT LEGENDS



NO STOPSCREWS  
FOR 360° ROTATION  
ØØNO LEGENDS



NOTE - UNIT SHOWN IS  
FOR 180° OPERATION



OUTPUT KEYWAY DETAILS  
SHOWN IN OPEN POSITION

## GENERAL INFORMATION

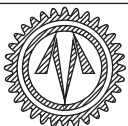
TRAVEL.....180° +/- 5° AT BOTH ENDS  
OR 360°  
RATIO.....171:1  
TURNS TO CLOSE.....85.5 AT 180°

MECHANICAL ADVANTAGE.....44.5 +/- 10%  
MAXIMUM OUTPUT TORQUE.....6135 Nm  
MAXIMUM INPUT TORQUE.....138 Nm

MOUNTING HOLE DETAIL: PREFERRED....F16 (4 x M20 ON 165 PCD)  
MAXIMUM.....F20 (8 x M12 ON 197 PCD)  
MINIMUM.....F16

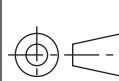
APPROXIMATE WEIGHT.....61 Kg (excluding handwheel)

HANDWHEEL DATA		
HANDWHEEL DIA	'S'	
10"	254	32
12"	305	32
14"	356	32
18"	457	45
24"	610	45
30"	762	45
36"	914	63



## OPPERMAN MASTERGEAR

Hambridge Road, Newbury, Berkshire, RG14 5TS. ENGLAND  
Telephone: (01635) 811500 Telefax: (01635) 811501



DIMENSIONS IN	SCALE	DRAWING No.
MM INCHES	1:6.5	ME-15509

THIS DRAWING/DESIGN IS THE PROPERTY OF OPPERMAN MASTERGEAR LTD. AND ©  
MUST NOT BE USED OR COPIED WITHOUT THEIR SPECIFIC WRITTEN CONSENT.

REV. A  
19DEC95