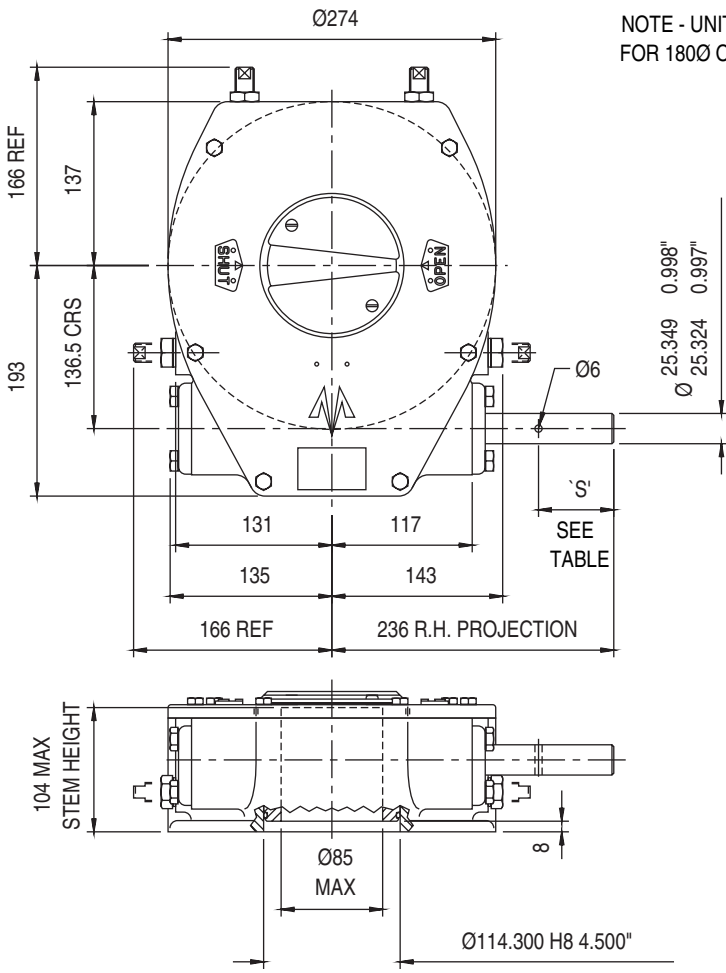
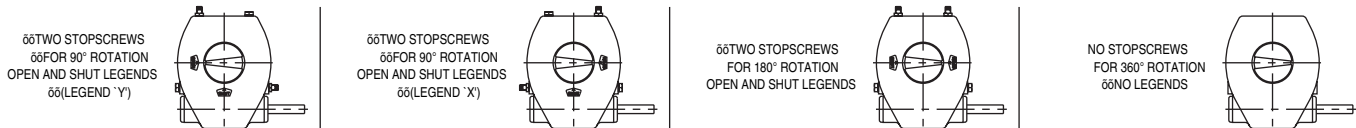
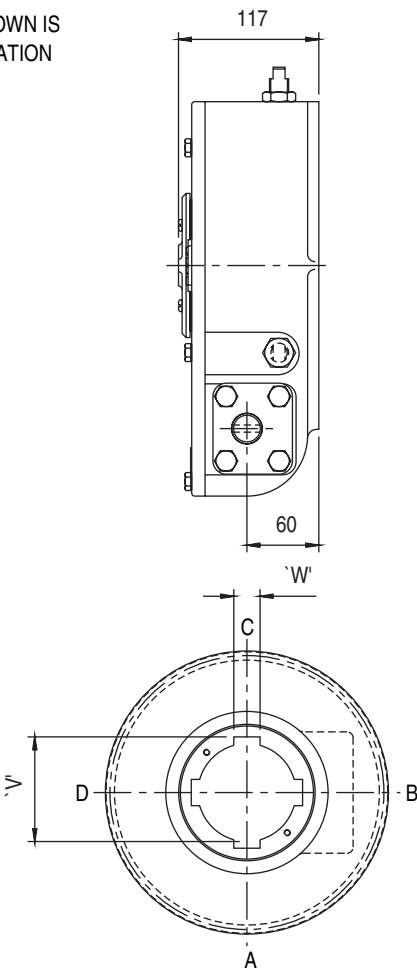


ACTUATOR TYPE - MWCF72



NOTE - UNIT SHOWN IS FOR 180° OPERATION



GENERAL INFORMATION

TRAVEL..... 90° +/- 5° AT BOTH ENDS
 OR 180° +/- 5° AT BOTH ENDS
 OR 360°
 RATIO.....72:1
 TURNS TO CLOSE.....18 AT 90° 36 AT 180°

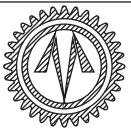
MECHANICAL ADVANTAGE.....19.4 +/- 10%
 MAXIMUM OUTPUT TORQUE.....3390 Nm
 MAXIMUM INPUT TORQUE.....175 Nm

MOUNTING HOLE DETAIL: PREFERRED....F16 (4 x M20 ON 165 PCD)
 MAXIMUM.....F16
 MINIMUM.....F14 (4 x M16 ON 140 PCD)

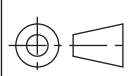
APPROXIMATE WEIGHT.....36 Kg (excluding handwheel)

OUTPUT KEYWAY DETAILS SHOWN IN OPEN POSITION

HANDWHEEL DATA		
HANDWHEEL DIA	`S`	
10"	254	32
12"	305	32
14"	356	32
18"	457	45
24"	610	45
30"	762	45
36"	914	63



OPPERMAN MASTERGEAR
 Hambridge Road, Newbury, Berkshire, RG14 5TS. ENGLAND
 Telephone: (01635) 811500 Telefax: (01635) 811501



DIMENSIONS IN	SCALE	DRAWING No.
MM INCHES	1:6	ME-15505

THIS DRAWING/DESIGN IS THE PROPERTY OF OPPERMAN MASTERGEAR LTD. AND ©
 MUST NOT BE USED OR COPIED WITHOUT THEIR SPECIFIC WRITTEN CONSENT.

REV. A
 11OCT95