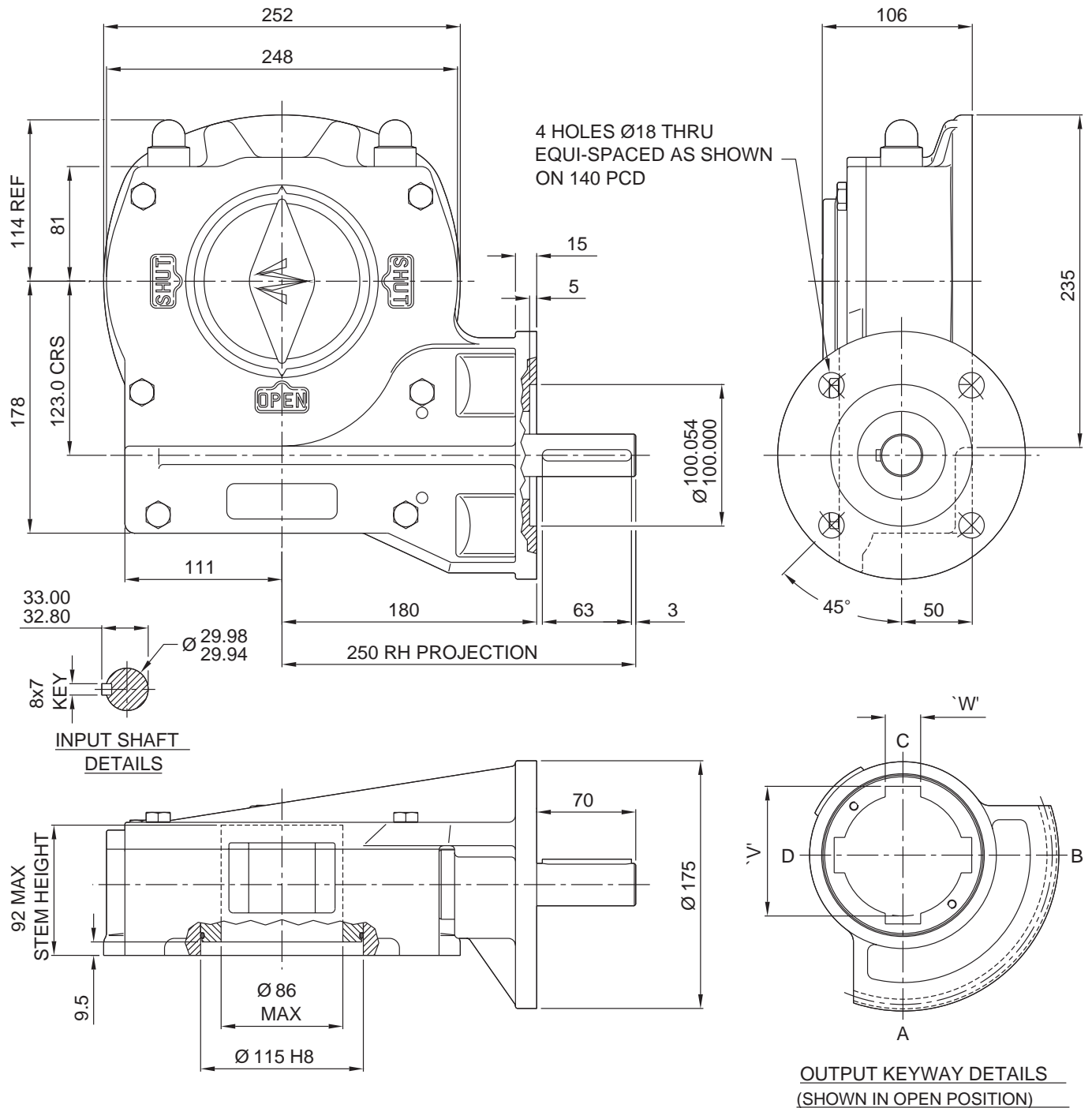


# ACTUATOR TYPE - M15/F14

# SL039



BASIC PARTS BUILD No. N/A

TRAVEL.....90° +/- 5° AT BOTH ENDS

RATIO.....68:1

TURNS TO CLOSE.....17

MECHANICAL ADVANTAGE.....20.5 +/- 10%

MAXIMUM OUTPUT TORQUE.....3400 Nm

MAXIMUM INPUT TORQUE.....166 Nm

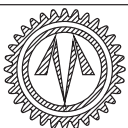
MOUNTING HOLE DETAIL (ISO 5211):

PREFERRED....F16 (4 x M20 ON 102 PCD)165

MAXIMUM.....F20 (8 x M12 ON 197 PCD)

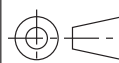
MINIMUM.....F14 (4 x M16 ON 140 PCD)

APPROXIMATE WEIGHT.....33.5 Kg



## OPPERMAN MASTERGEAR

Hambridge Road, Newbury, Berkshire, RG14 5TS. ENGLAND  
Telephone: (01635) 811500 Telefax: (01635) 811501



DIMENSIONS  
IN

SCALE

DRAWING  
No.

1:6.5

ME15360

THIS DRAWING/DESIGN IS THE PROPERTY OF OPPERMAN MASTERGEAR LTD. AND  
MUST NOT BE USED OR COPIED WITHOUT THEIR SPECIFIC WRITTEN CONSENT.