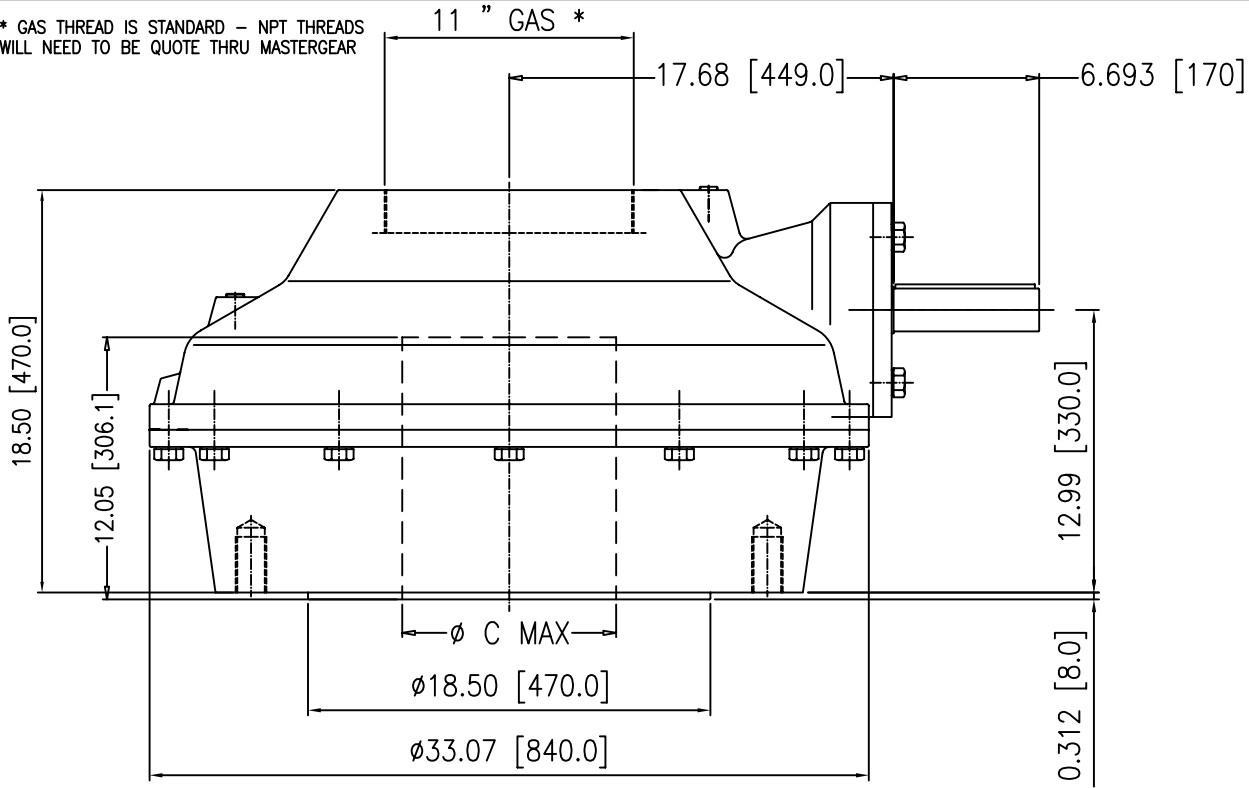
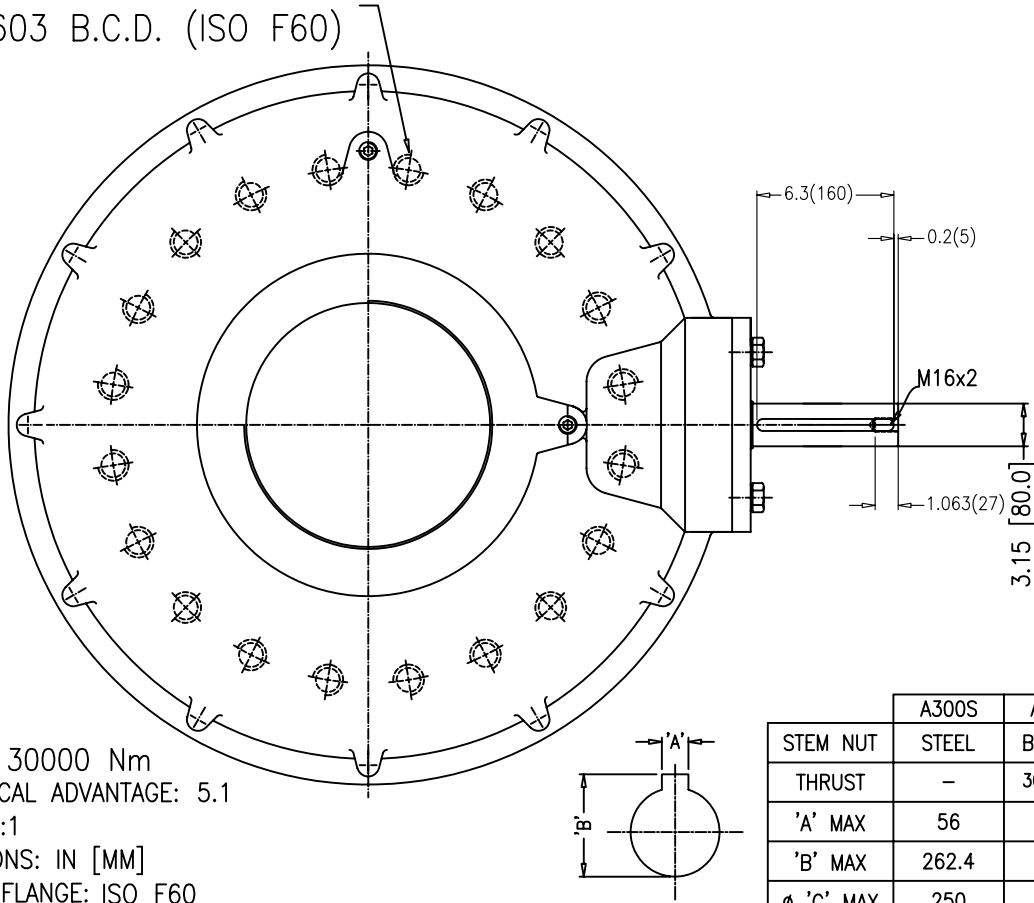


A300 BEVEL GEAR ISO

* GAS THREAD IS STANDARD - NPT THREADS WILL NEED TO BE QUOTE THRU MASTERGEAR



M36 TAP ~ 20 HOLES
ON A 603 B.C.D. (ISO F60)



NOTES:

1. TORQUE: 30000 Nm
2. MECHANICAL ADVANTAGE: 5.1
3. RATIO: 6:1
4. DIMENSIONS: IN [MM]
5. OUTPUT FLANGE: ISO F60

	A300S	A300R
STEM NUT	STEEL	BRONZE
THRUST	-	3000 KN
'A' MAX	56	-
'B' MAX	262.4	-
phi 'C' MAX	250	200



COSTRUZIONI MECCANICHE LEGNANESI

MASTERGEAR

DIVISION OF REGAL-BELOIT CORPORATION
5466 EAST ROCKTON RD. SOUTH BELOIT, IL 61080

THIS DRAWING/DESIGN IS THE PROPERTY OF MASTERGEAR. AND MUST NOT BE USED WITHOUT THEIR SPECIFIC WRITTEN CONSENT. ©

DO NOT SCALE
APPROVED BY
LD

DRAWING No.
A300 ISO
REV.0
16-04-03