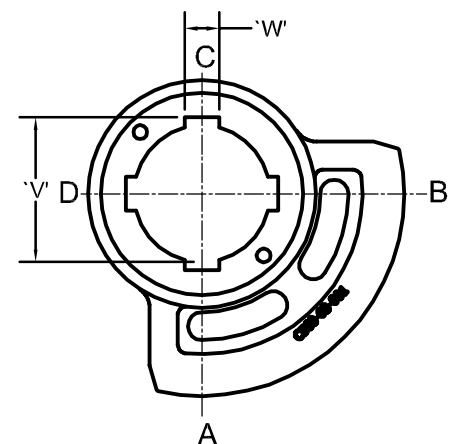
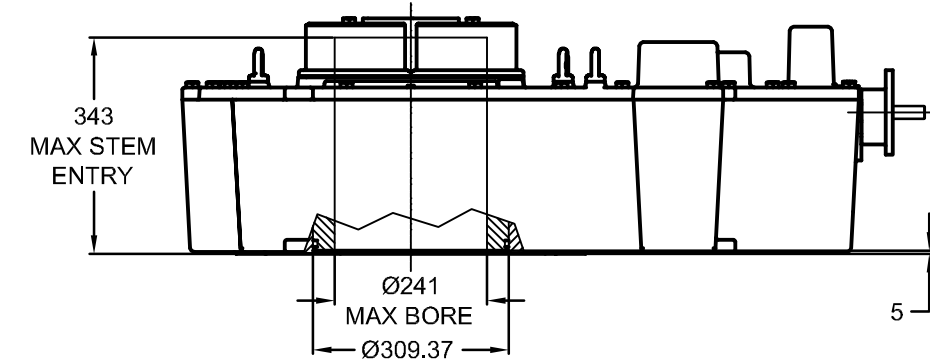
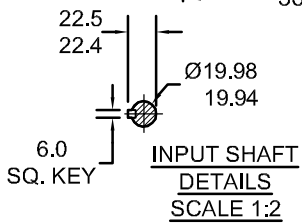
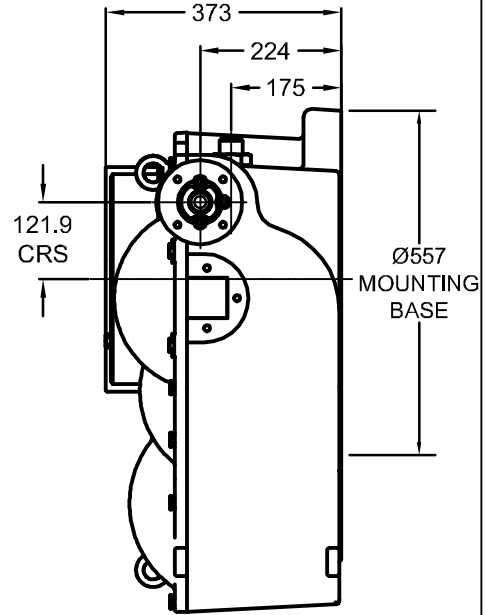
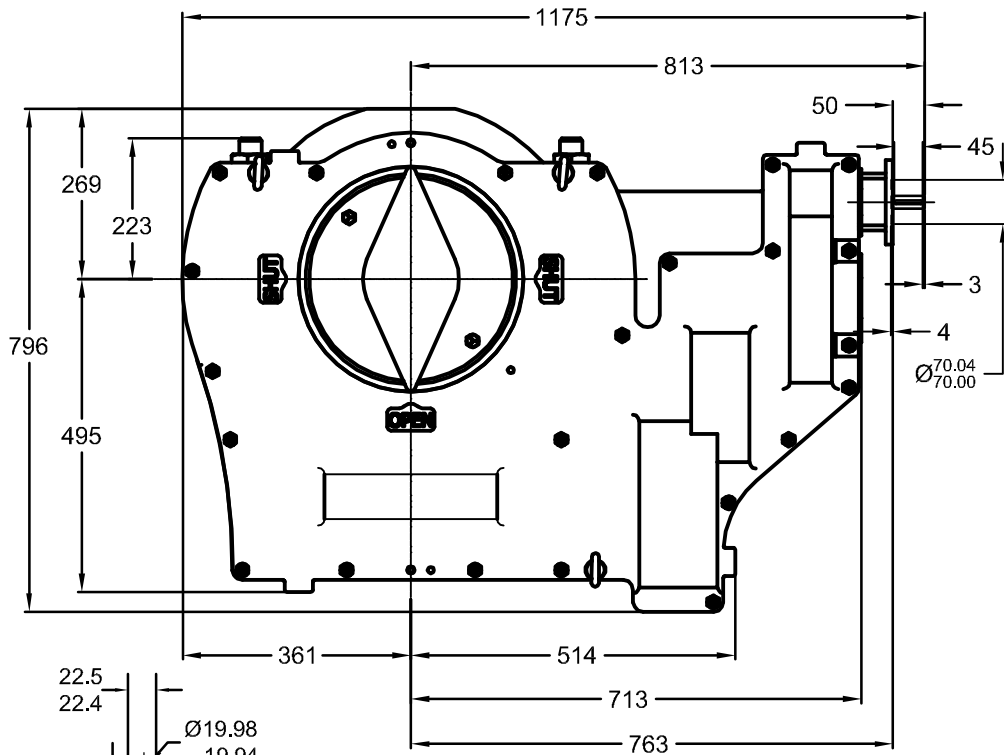


ACTUATOR: MF70/F10

SL039



GENERAL INFORMATION

TRAVEL.....	90° ±5° AT BOTH ENDS		
RATIO.....	3407.8:1		
URNS TO CLOSE.....	851.96	MAXIMUM OUTPUT TORQUE(2500 CYCLES)....	169,500 Nm
MECHANICAL ADVANTAGE...735.1 ±10%		MAXIMUM INPUT TORQUE(2500 CYCLES).....	231 Nm

MOUNTING HOLE DETAIL: PREFERRED....F48 (12 x M36 ON 483 BCD)
 (ISO 5211) MAXIMUM.....F48
 MINIMUM.....F40 (8 x M36 ON 406 BCD)

APPROXIMATE WEIGHT.....797 Kg



DIMENSIONS IN INCHES	SCALE	DRAWING No.
	1:12	MF70/F10 METRIC

THIS PRINT IS CONFIDENTIAL AND IS THE PROPERTY OF MASTERGEAR. THIS PRINT SHALL NOT BE USED, COPIED OR REPRODUCED IN WHOLE OR IN PART NOR SHALL THE CONTENTS BE REVEALED IN ANY MANNER TO ANYONE UNLESS WRITTEN PERMISSION IS OBTAINED FROM MASTERGEAR. ©

JLP

REV. A
9/17/09