

BASIC PARTS BUILD No. N/A

TRAVEL..... 90° ±5° AT BOTH ENDS
 RATIO..... 238:1
 TURNS TO CLOSE... 59.5

MECHANICAL ADVANTAGE..... 67.6 ±10%
 MAXIMUM OUTPUT TORQUE... 3400 Nm
 MAXIMUM INPUT TORQUE..... 50.3 Nm

MOUNTING HOLE DETAIL (ISO 5211)

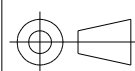
PREFERRED F16 (4 x M20 on 165 PCD)
 MAXIMUM F20 (8 x M12 on 197 PCD)
 MINIMUM..... F14 (4 x M16 on 140 PCD)

APPROXIMATE WEIGHT..... 35.5 kg



OPPERMAN MASTERGEAR

Hambridge Road, Newbury, Berkshire, RG14 5TS, ENGLAND
 Telephone: (01635) 811500 Telefax: (01635) 811501



To BS308

DIMENSIONS
 IN
 MM [INCHES]

DATE	20DEC01
DRAWN	JDH
CHECKED	PAB
SCALE	1:4

This drawing/design is the property of OPPERMAN MASTERGEAR Ltd. and must not be used or copied without their specific written consent



DRG No. ME-153xx

REV. A