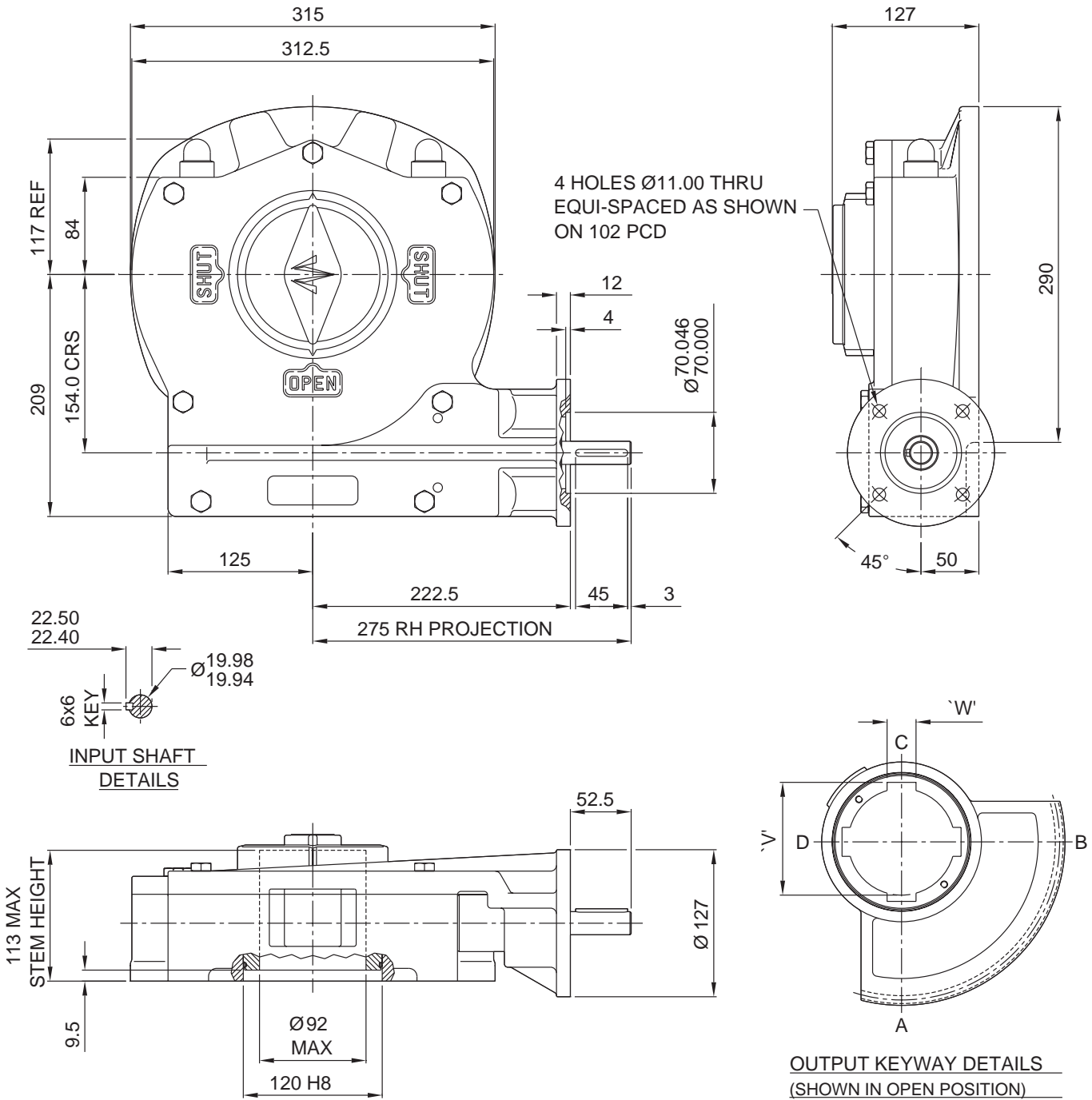


ACTUATOR TYPE - M16/F10

SL039



BASIC PARTS BUILD No. N/A

TRAVEL.....90° +/- 5° AT BOTH ENDS

RATIO.....88:1

TURNS TO CLOSE.....22

MECHANICAL ADVANTAGE.....26.5 +/- 10%

MAXIMUM OUTPUT TORQUE.....4500 Nm

MAXIMUM INPUT TORQUE.....170 Nm

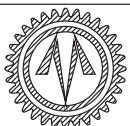
MOUNTING HOLE DETAIL (ISO 5211):

PREFERRED....F16 (4 x M20 on 165 PCD)

MAXIMUM.....F25 (8 x M16 on 254 PCD)

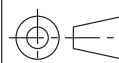
MINIMUM.....F16

APPROXIMATE WEIGHT.....45 Kg



OPPERMAN MASTERGEAR

Hambridge Road, Newbury, Berkshire, RG14 5TS. ENGLAND
Telephone: (01635) 811500 Telefax: (01635) 811501



DIMENSIONS
IN

SCALE

DRAWING
No.

MM INCHES

1:6.5

ME15363

THIS DRAWING/DESIGN IS THE PROPERTY OF OPPERMAN MASTERGEAR LTD. AND
MUST NOT BE USED OR COPIED WITHOUT THEIR SPECIFIC WRITTEN CONSENT.