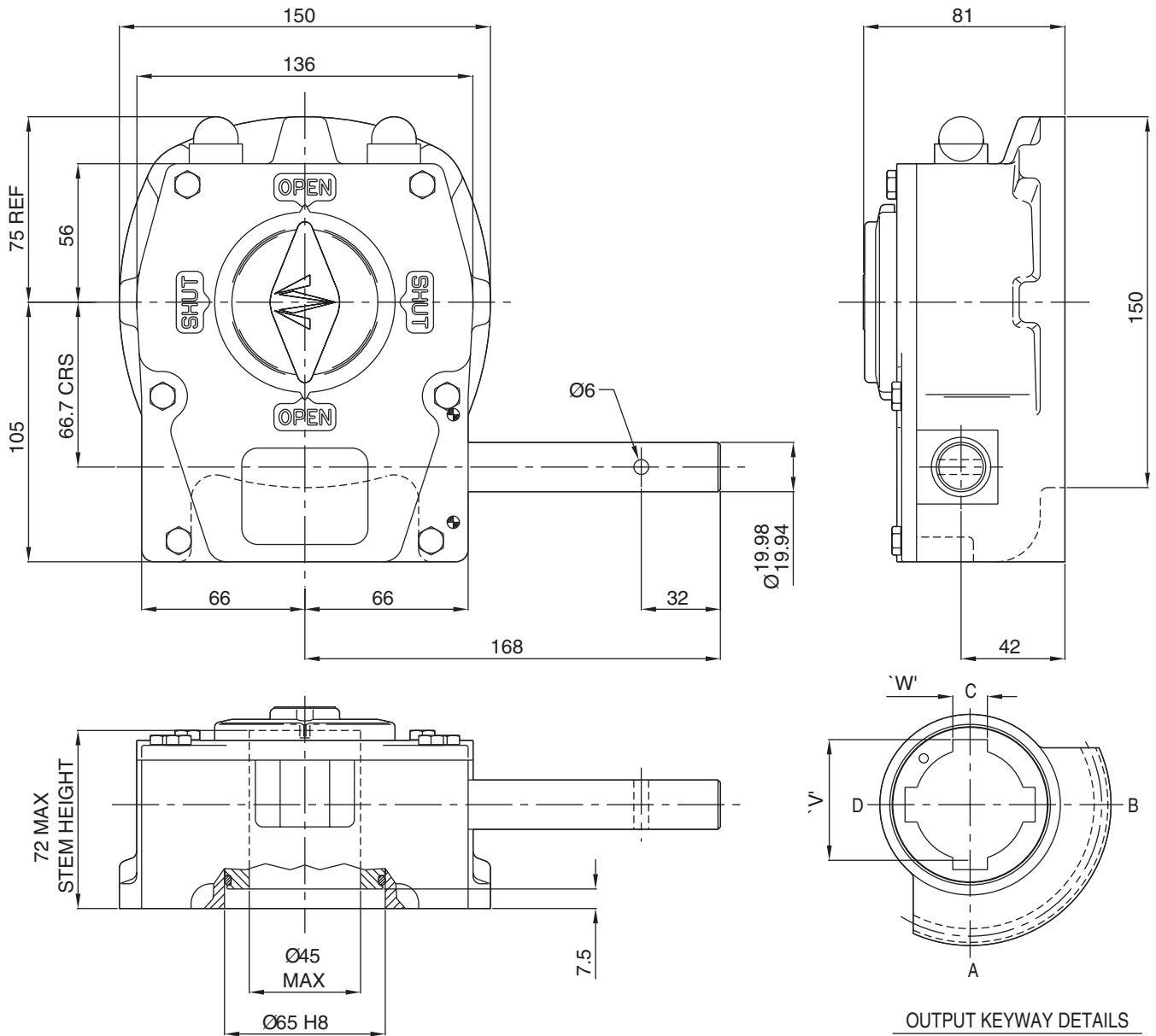


ACTUATOR TYPE - M12



GENERAL INFORMATION

TRAVEL.....90° +/- 5° AT BOTH ENDS
 RATIO.....42:1
 TURNS TO CLOSE.....10.5

MECHANICAL ADVANTAGE.....11.3 +/- 10%
 MAXIMUM OUTPUT TORQUE.....1000 Nm
 MAXIMUM INPUT TORQUE.....88.5 Nm

MOUNTING HOLE DETAIL: PREFERRED.....F12 (4 x M12 ON 125 PCD)
 MAXIMUM.....F14 (4 x M16 ON 140 PCD)
 MINIMUM.....F10 (4 x M10 ON 102 PCD)

APPROXIMATE WEIGHT.....8.2 Kg (excluding handwheel)

OUTPUT KEYWAY DETAILS
 SHOWN IN OPEN POSITION

HANDWHEEL DATA	
TYPE	DIA
SR10	250
SR12	300
SR14	350
R18	450
R24	600



OPPERMAN MASTERGEAR

Hambridge Road, Newbury, Berkshire, RG14 5TS, ENGLAND
 Telephone: (01635) 811500 Telefax: (01635) 811501



DIMENSIONS
 IN

SCALE

DRAWING
 No.

MM INCHES

1:2.5

ME-15303

THIS DRAWING/DESIGN IS THE PROPERTY OF OPPERMAN MASTERGEAR LTD. AND ©
 MUST NOT BE USED OR COPIED WITHOUT THEIR SPECIFIC WRITTEN CONSENT.

REV. B
 05MAY94