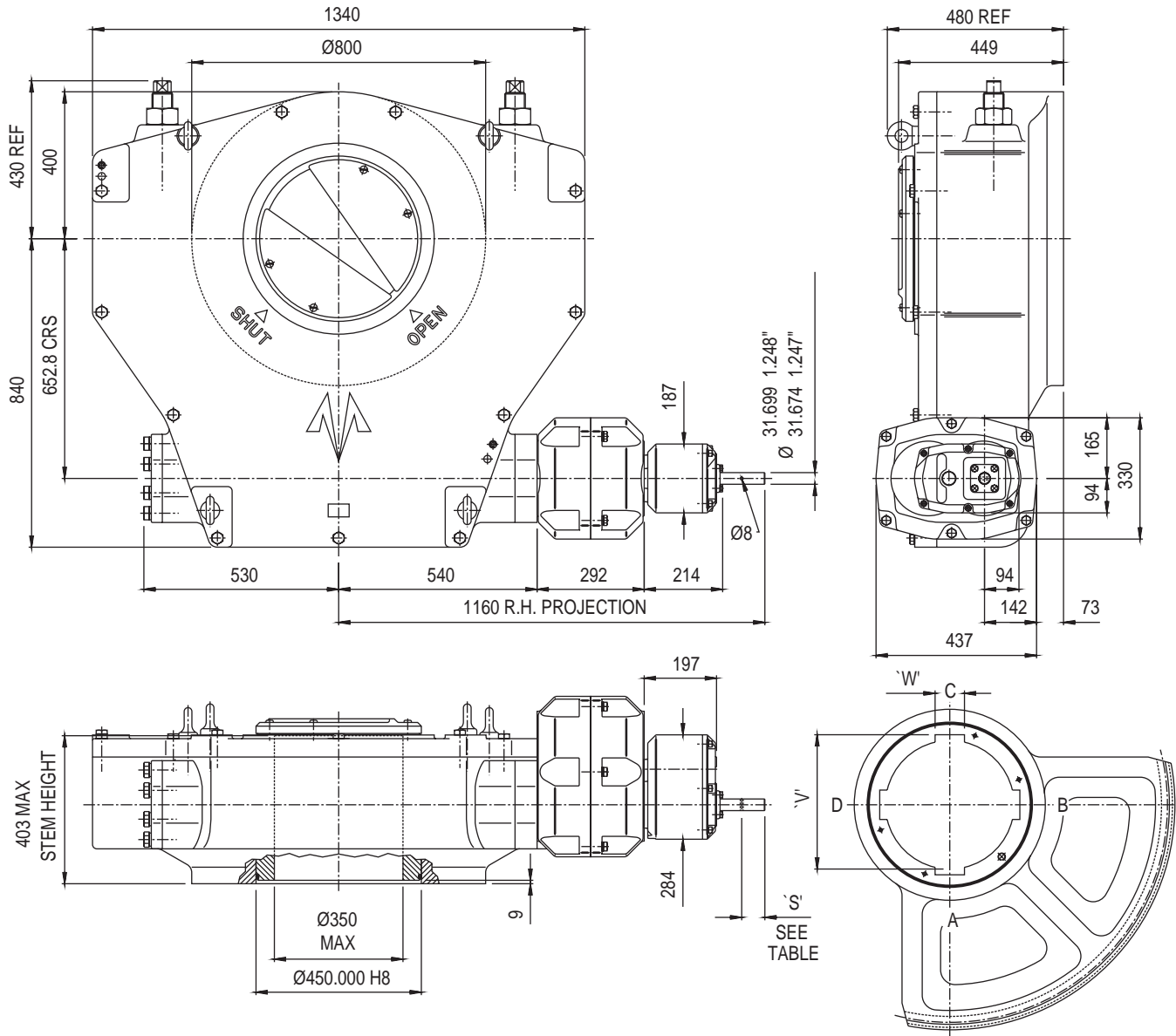


ACTUATOR TYPE - M200/DB9/D9



OUTPUT KEYWAY DETAILS SHOWN IN OPEN POSITION

GENERAL INFORMATION

TRAVEL.....90° +/- 5° AT BOTH ENDS
 RATIO.....7077.5:1
 TURNS TO CLOSE.....1769.38

MECHANICAL ADVANTAGE.....1623.7 +/- 10%
 MAXIMUM OUTPUT TORQUE.....271164 Nm
 MAXIMUM INPUT TORQUE.....167 Nm

MOUNTING HOLE DETAIL: PREFERRED....F60 (20 x M36 ON 603 PCD)
 MAXIMUM.....F60
 MINIMUM.....F60

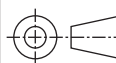
APPROXIMATE WEIGHT.....2310 Kg (excluding handwheel)

HANDWHEEL DATA		
HANDWHEEL DIA	'S'	
18"	457	45
24"	610	45
30"	762	45
36"	914	63



OPPERMAN MASTERGEAR

Hambridge Road, Newbury, Berkshire, RG14 5TS. ENGLAND
 Telephone: (01635) 811500 Telefax: (01635) 811501



DIMENSIONS
IN

SCALE

DRAWING
No.

MM INCHES

1:17

ME-15083

THIS DRAWING/DESIGN IS THE PROPERTY OF OPPERMAN MASTERGEAR LTD. AND ©
 MUST NOT BE USED OR COPIED WITHOUT THEIR SPECIFIC WRITTEN CONSENT.

REV. A
 15MAR94